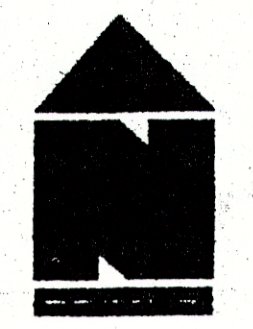


PART OF SECTIONS 8, 15, 16 & 17, T. 17 N., R. 20 E., W.M.

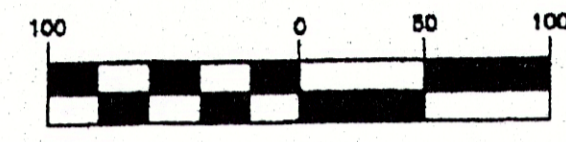
SP-03-17



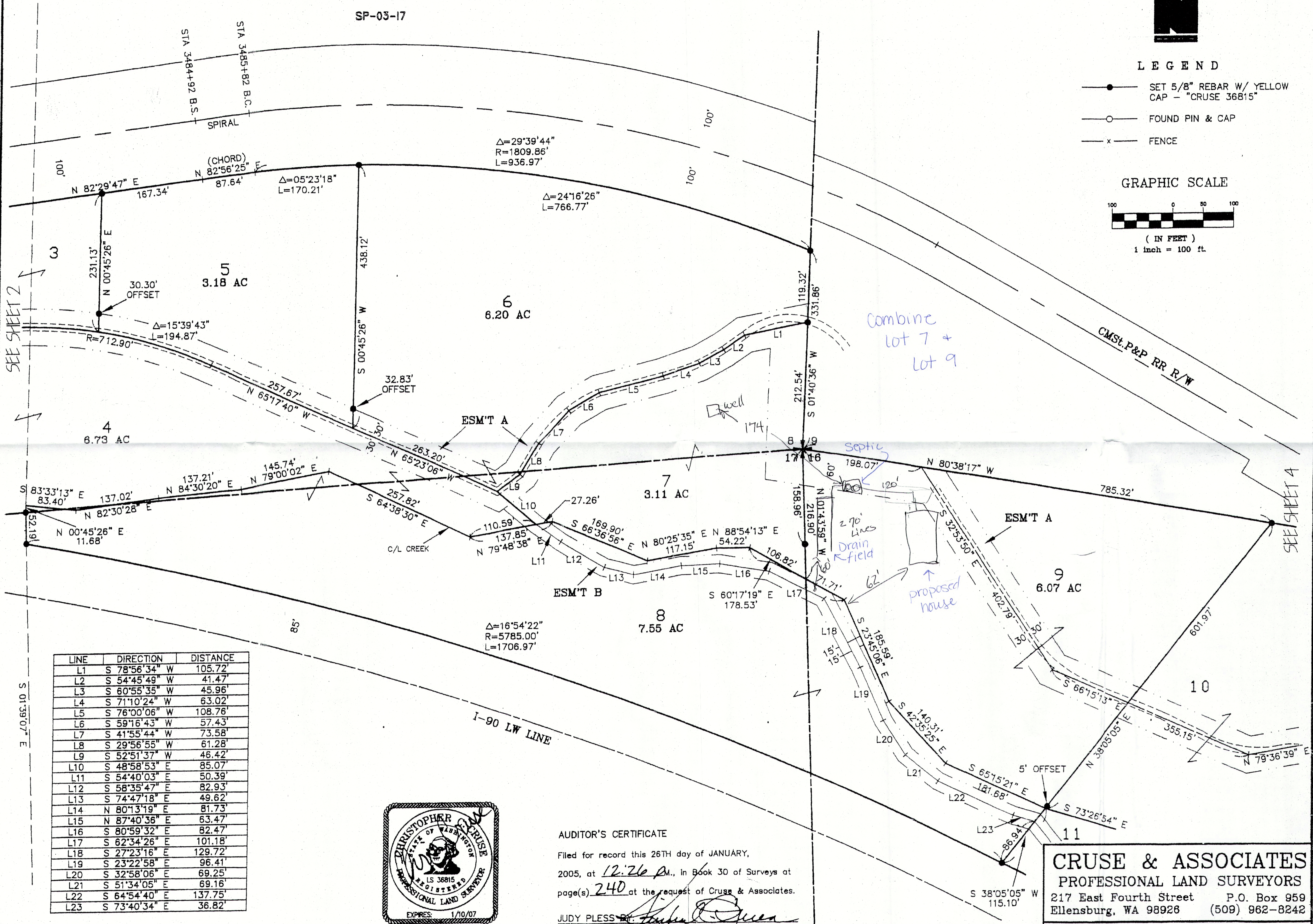
LEGEND

- SET 5/8" REBAR W/ YELLOW CAP - "CRUSE 36815"
- FOUND PIN & CAP
- x — FENCE

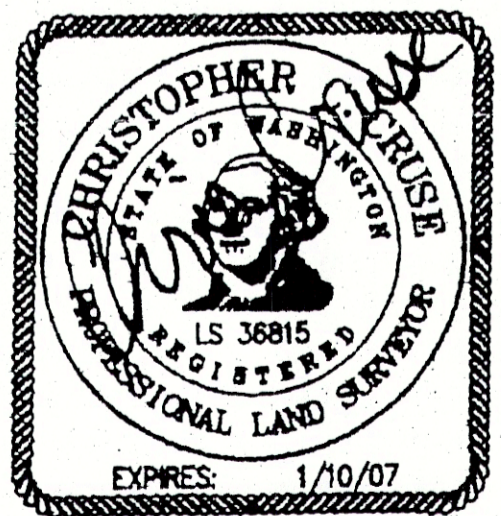
GRAPHIC SCALE



(IN FEET)
1 inch = 100 ft.



LINE	DIRECTION	DISTANCE
L1	S 78°56'34" W	105.72'
L2	S 54°45'49" W	41.47'
L3	S 60°55'35" W	45.96'
L4	S 71°10'24" W	63.02'
L5	S 76°00'06" W	108.76'
L6	S 59°16'43" W	57.43'
L7	S 41°55'44" W	73.58'
L8	S 29°56'55" W	61.28'
L9	S 52°51'37" W	46.42'
L10	S 48°58'53" E	85.07'
L11	S 54°40'03" E	50.39'
L12	S 58°35'47" E	82.93'
L13	S 74°47'18" E	49.62'
L14	N 80°13'19" E	81.73'
L15	N 87°40'36" E	63.47'
L16	S 80°59'32" E	82.47'
L17	S 62°34'26" E	101.18'
L18	S 27°23'16" E	129.72'
L19	S 23°22'58" E	96.41'
L20	S 32°58'06" E	69.25'
L21	S 51°34'05" E	69.16'
L22	S 64°54'40" E	137.75'
L23	S 73°40'34" E	36.82'



JANUARY 26, 2005

AUDITOR'S CERTIFICATE

Filed for record this 26TH day of JANUARY, 2005, at 12:26 P.M., in Book 30 of Surveys at page(s) 240 at the request of Cruse & Associates.

JUDY PLESS, Interim Auditor
INTERIM KITTITAS COUNTY AUDITOR

CRUSE & ASSOCIATES
 PROFESSIONAL LAND SURVEYORS
 217 East Fourth Street P.O. Box 959
 Ellensburg, WA 98928 (509) 962-8242

DEFOOR PROPERTY

